



The complete MK Glove Testing System
for your safety

MK Glove Ports

- + **MK Glove Test Device**
- + **MK Gloves**
- + **MK Glove Integrity Testing Software**

- Port and glove recognition with integrated RFID technology
- Automatic machine validation and generated reports
- Customizable to your port size
- Usable as stand-alone or fully integrated system
- Complete qualification service
- Made in Germany, ISO:9001 certified

Contact us

MK Versuchsanlagen GmbH & Co. KG

Stückweg 10 • 35325 Mücke

+49 6400 9576030

sales@mk-versuchsanlagen.de

www.mk-versuchsanlagen.de



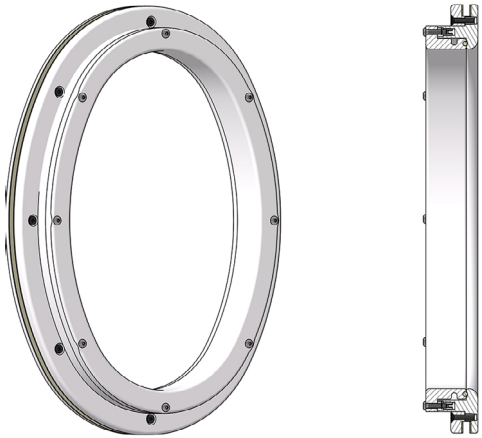
MK Glove Ports

Maximum safety, perfect fit –
tailored to your barrier system



Model SX

- Gas tight glove fixation on the support ring
- Secure and stable attachment for demanding applications
- Robust construction for reliable sealing and high durability



General information

Our fully in house production in Mücke, Germany, enables the manufacturing of individually customized glove ports – precisely tailored to laboratory, research, and cleanroom applications. Whether round, oval, or flat oval: shape, size, and material are manufactured exactly according to your requirements.

Size and shape: Individually customizable image of various shapes (round, flat oval, oval)

Wall thicknesses: Suitable for wall thicknesses from 8 to 12 mm. Customizable for any size, for example thin sheet metal walls or thicker, robust window panels.

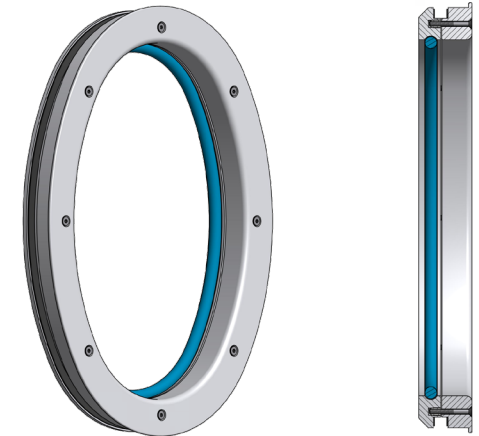
Material: Available in PVC or POM. Other materials, such as conductive polyethylene, are available upon request.

Integrated RFID technology: Built-in RFID chip for automatic identification with the MK Glove Testing System WIFI (additional hardware and software required).

Individual ports available upon request.

Model B

- Slim construction
- Fast glove changes without screws
- Easy glove fixation using a clamping ring



Model V

- Quick clamping and glove replacement without screws

